

## DIAGNOSTIC TECHNIQUES

# INTRADERMAL TESTING

### CONTENTS

WHEN DO I DO IT? : 5.1

WHAT CAN I FIND? : 5.1

TECHNIQUE IMAGES : 5.2

WHAT DO I NEED? : 5.2

HOW DO I DO IT? : 5.2

TIP : 5.3

### WHEN DO I DO IT?

- After a clinical diagnosis of atopic dermatitis has been made and you want to identify the relevant allergens to include in an allergy vaccine
- As an adjunct test to confirm flea allergy in a dog

### WHAT CAN I FIND?

- Identify the most important environmental allergens (house dust mites; animal danders; pollens from trees, weeds and grasses; molds)

## WHAT DO I NEED?

- An assortment of relevant allergens, usually about 50, diluted to proper skin test concentration
- Tuberculin syringes and 25 ga needles, clippers, permanent marker pen, calipers or ruler to measure reaction sites

**EQUIPMENT VIDEO:** [ExcellenceInDermatology.com](http://ExcellenceInDermatology.com) → [Education Library](#) → [Videos](#)

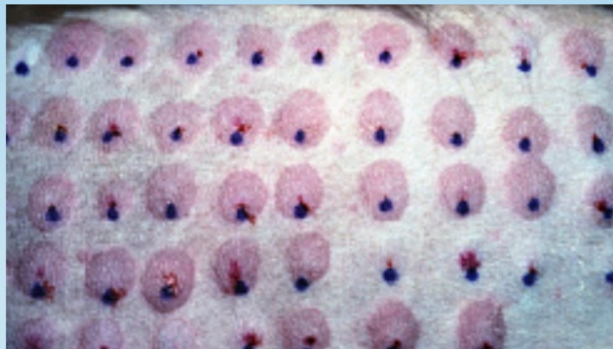
## TECHNIQUE IMAGES : INTRADERMAL TESTING



Multiple syringes filled with allergens for intradermal testing



Injecting allergen into the dermis



Multiple positive reactions in a dog with atopic dermatitis



Positive intradermal test to flea allergen ((-) and (+) controls on the top row)

## HOW DO I DO IT?

- If necessary sedate the dog with medetomidine or propofol
- Clip the hair from the lateral thorax
- Mark the sites with a permanent marker pen

- Inject approximately 0.05 ml of the negative and positive control controls as well as each allergen
- Reaction sites are examined 10 to 20 minutes later and evaluated for size, erythema and turgor and graded from 0 to 4+.

**PROCEDURE VIDEO:** [ExcellenceInDermatology.com](#) → [Education Library](#) → [Videos](#)

---

## TIP

---

- This test will not diagnose the disease but should only be used for those patients where immunotherapy is going to be used to treat atopic dermatitis
- Most dogs with flea allergy will show an immediate reaction but some will only have a delayed (24-48 hour) reaction